

GFT 93

GFT 93



GFT 93 (28.35 m) - MCP YACHTS

Length Overall: 28.35 m
Maximum Beam : 6.58 m
Maximum Draft: 1.74 m
Fast Cruising Speed: 16 - 17 knots
Design type: Motor Yacht Tri-Deck



Additional Specifications for Motor Yacht GFT 93:

Length Overall:	28.35 m	External Design:	MCP Design Team
Length Between Perpendiculars:	21.28 m	Interior Design:	MCP Design Team – Oversee Yachts
Maximum Beam :	6.58 m	Thrusters (bow/stern):	Bow/Stern
Maximum Draft:	1.74 m	Engines:	MAN V10 2 x 1050 BHP
Maximum Displacement:	98.08 ton	Sewage Treatment	MCP Yachts System
Light Displacement:	70.09 ton	Flag:	BRA ou International
Diesel Capacity:	19,650 l	Commercial Classification (optional):	MCA/MI Comercial
Fresh Water Capacity :	6,500 l	Night Sleep:	17
Fast Cruising Speed:	16 - 17 knots	Cabins:	5
Autonomy:	3000 nm	Passengers:	13
Type:	Semi Displacement	Captain's Bridge Cabin:	Yes
Hull Classification:	Lloyd's Register	Heads:	8
Hull Material:	Aluminum	Crew	4
Superstructure Material:	Aluminum	Crew bunks:	4 + 1
Hull Design:	MCP Design Team		

Vessel description

Construction :

- Total of five cabins, four passengers' cabins and a master for owner at the main deck.
- Two forward cabins on the lower deck for crew.
- Captain's cabin behind wheelhouse.
- Finishing and wood choices as client option
- Hull and Superstructure in Aluminum 5083 for plates and 6082 for profiles
- Lloyd's Register classification for the design and Structural construction with respective follow up
- Fuel double bottom tanks under cabins. Tanks serving as protection for grounding.
- Propellers and Rudders protected by structural skeg against bottom collision.
- Four Watertight bulkheads : Forward peak tank, crew quarters, engine room and diving room

Machinery :

- Two MAN V10 1,050 HP – 2.100 RPM, coupled by cardan shafts to TWIN DISC gearboxes. Gearboxes equipped with trolling valve to smooth maneuvers having total control.
- Fuel Filtering System with three elements interchangeable for each Main Engine and one element for each Generator Set
- Diesel Purifying Plant by Alfa Laval fed from cruising tanks and double bottom tanks to keep Daily Tank at Engine Room with utmost quality diesel
- Naiad Stabilization System 302, Multi-Sea 2000, with two actuators having 12 sqft each fin (Zero Speed System as optional)
- Hydraulic Bow and Stern Thrusters from WESMAR, NAIAD or similar brand using V2-16" - 45 hp, counter-rotating propellers on the bow and V2-12"- 25 hp astern.
- HRO reverse osmosis watermaker unit 1800 gallons per day (6750 liters/day).
- Headhunter toilettes
- Headhunter water pressure system
- Marine Air, Aqua Air or other top brand air-conditioning system, having 3 central compressors of 60000 BTU each, equipped with frequency driver soft starters.
- Bilge Pump and Fire Pump having backup operation. Fire pump under waterline level for immediate operation. Sea or fresh water chain / Anchor washing facility.
- Fresh water flushing system while not in use for extended life on Main Engines, Generators, Air Conditioning and water maker unit.
- Two sea chests in aluminum with filter, vent and closing cocks.
- Lube Oil Exchange System, type X-Changer 950G, for main engines, generator sets and gearboxes. System has a dedicated electrical pump and line.
- DURAMAX Mechanical Seals for shaft line.
- Acoustic barrier for the Engine Room with 50 mm thickness special material covered with light aluminum perforated plate and finishing foam.
- Diving Room workbench for small maintenance and repairs.
- Work compressor, extra silent, for general cleaning and inflatable tender filling.
- Diving compressor to load diving tanks. Cooling system for efficient diving tanks air charge.
- Glendining or similar Shore Power Cable and housing having remote control.
- Underwater main engines exhaust outlets.

Electrical system :

- Two generator sets 32 kw Onan, Northern Lights or similar, 1800 rpm, 220 VAC, 3-phase, 60 hz. Silent system for hull discharging having water/gas separator
- Dedicated 3-phase lines for high consumption equipment.
- Shore Power Converter ASEA or similar, having 30 KW capacity, providing vessel with 220 VAC, 3-phase, 60 HZ, in Marinas or Harbors where source of energy ranges from 170 to 550 VAC, and frequency range is 50 to 60 HZ, either one phase or three phase.
- Two battery chargers. One 12 VDC for service / generators / electronic bank and 24 VDC for main engines and electronic battery banks.

Electronics :

- Main engines LCD's displays in the console area at FLY BRIDGE, doubled information to LCD display at Bridge managed by monitoring system that includes maintenance and cruising data
- Satellite communication system F55 or similar having telephone, fax, email and internet browsing capabilities (higher systems could be installed as optional)
- Satellite TV with 4 decoders to be installed under Owner's request
- Search Light over wheelhouse.
- Buell 3 air Horns or similar.
- Monitoring system using SCADA technology by Elipse showing vessel CAD drawings having complete follow up for : bilge alarms, tanks levels, smoke detectors, maintenance due, generators main datas, hydraulic oil temperatures, etc... (several other possibilities under owner's request)
- Color Video System to monitor vessels areas and interact with navigation and television system. Crew quarter display. Standard color cameras are : 2 units in the Engine Room, 2 units on bridge deck walkways and 1 camera looking astern at the Main Deck salon entrance.
- Phone System having 8 stations spread through out vessel, interfaced with mobile antenna for coastal calls and sat system for blue ocean calls.
- Sound and Video extra systems available upon request.
- Universal Mega yacht electronics package at bridge: 2 control displays respectively for captain and pilot with Radar and Navigation System, interfaced with camera system, auto pilot system, Naid or Wesmar Stabilization system panel, VHF station, Monitoring System Display, engine panel, main engines electronic throttle control having trolling capability, Bow and Stern thrusters joystick controls. AIS display, weather station (wind direction, wind speed, depth and multi display).

Decks :

- Main deck hosting superstructure in a “full beam design” in order to maximize main saloon volume. Portuguese Bridge and side passageway in the Bridge Deck.
- Vessel piloting stations on FLY BRIDGE, ASTERN MAIN DECK and WHEELHOUSE in order to facilitate vessel maneuvering.
- Fishing deck astern. Teak finished floor having a folding down bulwark hydraulic platform to be used as a diving platform. Bulwark is equipped with retractable deck cleats to be used while folded for inflatable and jetski mooring. Reinforced area on portside bulwark with Teak steps stairway having a hydraulic 180 degrees telescopic gangway.
- Main deck astern: MAXWELL winches, stainless steel leads, and storage area for lines. Working area hidden by cover with telescopic pressure cylinders. External Table for meals having fore and aft sliding system to be positioned as needed. Sofa with indirect lightning decoration system. Teak floor with compass card detail. Gangway doors on vessel sides equipped with Marquipt stairs to access pier. Stairs to the swimming platform area. Control Station Panel and equipment for stern Maneuvering.
- Main Deck – Interior area – Salon having a huge sofa area on the port side. Two huge TV flat screens. One in a TV Lift system at starboard side behind bar console. Second TV forward in a nice position for the dinner table guests. Classic bar in the stbd side entrance. Dinner table for 08 guests forward stbd. Kitchen at port side forward having a breakfast table with four seats. Kitchen fully equipped with all Thermador and Gaggenay appliances. Corean Kitchen top, furniture and bar tops in Brazilian or owner’s wish stone. Main Cabin having a TV set on the front wall, folding table for lap top, office furniture for printer / fax / etc... Main closet cabin port forward, bathroom forward stbd. side.
- Main Deck – Bow area – Comfortable sun cushion seats in both sides, one MAXWELL Anchor Winch, crew quarters entrance, fog bell and bell support structure, Chain locker entrance.
- Lower Deck / Passenger Deck – aft area having two Queen Size bed suites including, lockers, drawers, TV and private bathrooms. Forward area cabins (port and stbd) having each one two single beds. Facilities including lockers, drawers, TV and private bathrooms.
- Lower Deck / Crew Quarters – Freeman Watertight door, Laundry area with Washer and Dryer, maintenance access for boilers, bow thruster and other items maintenance. Area bellow crew quarter floors with maintenance access. Stairs going up to connect service area to crew quarters. Kitchen facilities (refrigerator, ceramic cooken top stove, “ss” sink and microwave) at stbd side. Crew bathroom port side. Forward port side a crew cabin having two single beds. Stbd side forward having a sofa and table with telescopic “ss” leg to transform table in a extra bed. Bed for one crew on stbd side top. Aluminum stair up for crew access and vessel emergency escape. TV unit and security display showing cameras view in the diferente vessel’s decks and engine room.
- Bridge Deck – Astern Area – Opacmare or similar fully controled davit port side. SR 15 inflatable tender having a 60 HP outboard engine. Jacuzzi pool with sofá having light bellow furniture. Jet Ski stored at the stbd side. Forward fiberglass stbd furniture having “ss” sink counter with electrical “BB” all bellow fiber glass cover lifted by hydraulic cylinder, flush doors bellow having drawers and space in order to store glasses, dishes and all necessary support items. Teak steps stair going up to the Fly-bridge.

- BRIDGE (wheelhouse) compartment – Sofa behind at the center / stbd side, folding navigation table port side with radio stations, instrument consoles, lap top table, two vertical stainless steel backing device with soft round tapestry for captain and pilot rest while driving. Wood deck.
- FLYBRIDGE DECK – Meal fiberglass special table close to center line with 04 set of seats in order to provide easy table access, sun areas behind. Side seats and captain seat having forward. Two electrical Barbecue appliances, sink and counter working top between captain seat and dinner table. Complete control station forward, Hard Top Bimini with heavy duty aluminum reinforced pipes to be folded on the radar arch while not in use. Opacmare or similar fully controled davit. SR 15 inflatable tender having a 60 HP outboard engine.
- DIVING ROOM - diving compressor, charging spot for diving tanks with cooling system, work compressor with low noise level, workbench, CO2 fire system for the engine room, ASEA power system for shore power voltage and frequency conversion, reverse osmosis desalination system, lockers, drawers, hydraulic package with tank for various applications such as rudder and stern door. Other facilities such us adicional refrigerators and freezers and a huge food storage are on stbd side. Second washer, dryer, ice machine, trash compactor under owner request and estimate.

Service :

- MAIN KITCHEN: dishwasher, stainless steel double faucet, ceramic glass cook top, Thermador set including microwave, thermal drawer, electric oven, side by side fridge / refrigerator.
- WASHER AND DRYER – one set at crew quarter. Second set at Diving Room under estimate

Safety at sea :

- EPIRB, SART, Inflatable Life Rafts, Life Jackets, Safety Flares, all included with the vessel delivery. MCA or MARSHALL ISLAND Commercial classification available as extra upon request.
- Fire Extinguishers placed on strategic spots according to legislation
- Fixed CO2 on Diving Room to cover Engine room needs.
- Hydrants on deck having Fire hoses stations.
- Monitoring system covering flooding and fire.
- Safety Cameras on Engine Room, Stern Deck and Lateral walkways

Important information :

All the specification above is an initial guide for equipments and systems of the mentioned vessel. Complete information to be negotiated with owner and further detailed under contract.

MCP YACHTS (MCP – Consultoria e Eng. Naval Ltda.) has full rights to alter any or all of the information mentioned in this literature at its own discretion in order to keep its policy of excellence and continuous improvement of its products.

Salon



Dinner Table view from Kitchen



Salon



Owner's Cabin





Guest's Cabin



Guest's Cabin



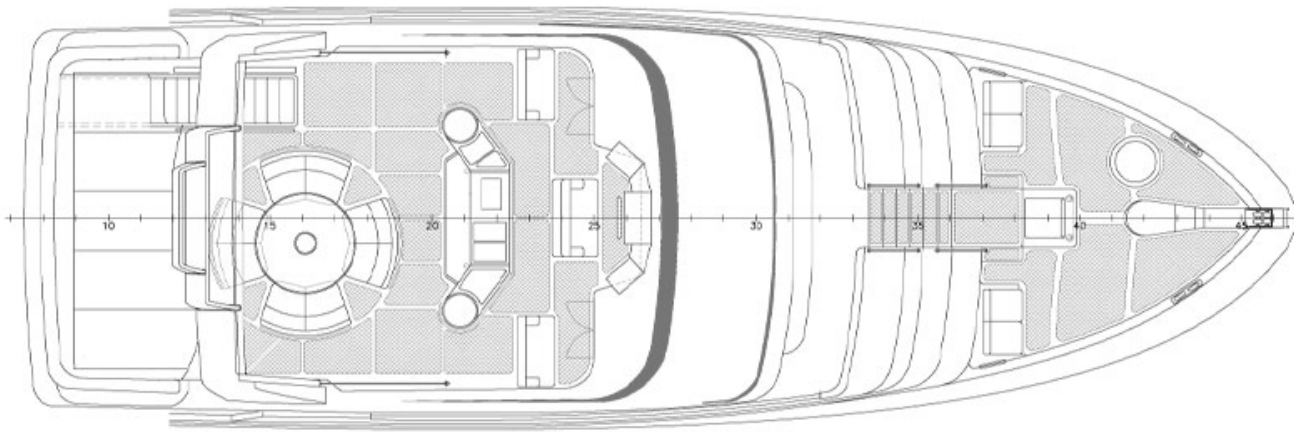
Guest's Cabin



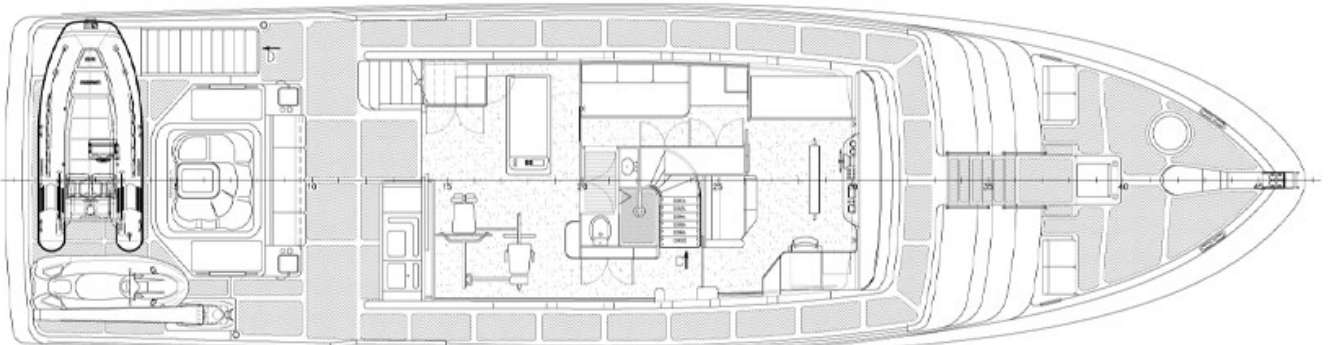
Wheelhouse



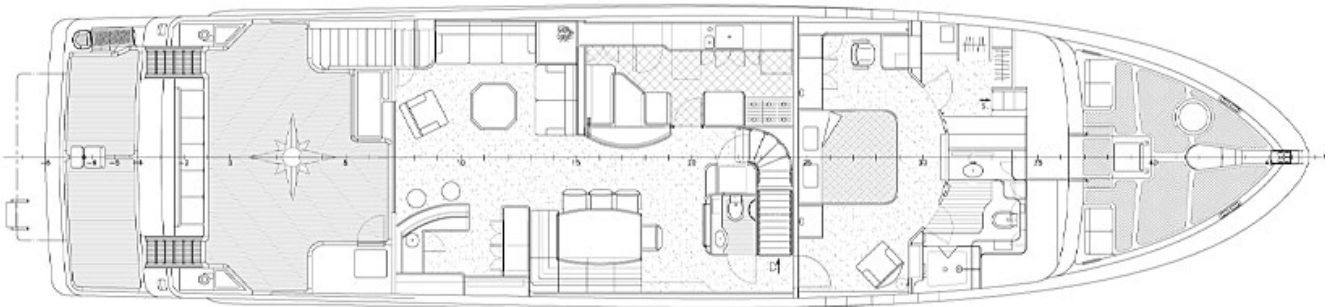
Flybridge Deck



Bridge Deck



Main Deck



Passenger and Crew Quarters Deck

