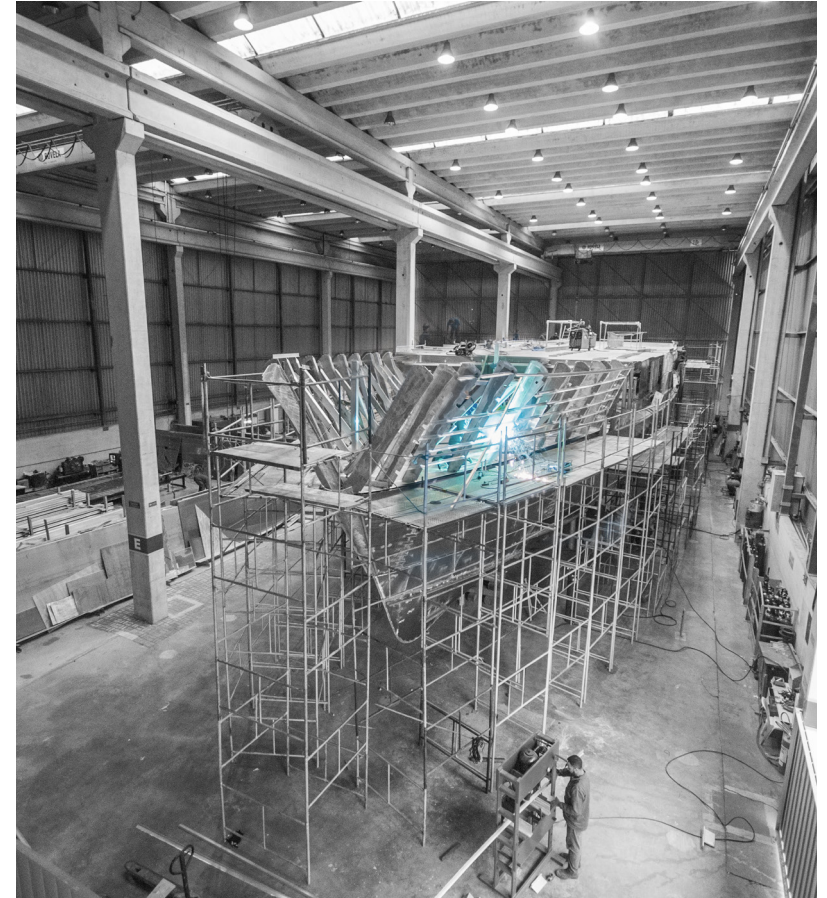




SEAVIEW 40 METERS



HULL UNDER CONSTRUCTION





WE ARE HAVING THE TIME OF OUR LIFE !

"SIM SENHOR", THAT'S WHAT WE WANT WITH OUR WHOLE FAMILY AND NOTHING LESS. HAVING THE TIME OF OUR LIFE ON BOARD. BUT TAKE CARE AS WE HAVE A BIG FAMILY AND THEY ALL LOVE BEING ON BOARD AT THE SAME TIME" THE SOUTH AMERICAN OWNER EXPRESSES CLEARLY WHAT YACHTING FOR HIM AND HIS FAMILY IS ALL ABOUT. "WE WANT TO GET MAXIMUM VALUE OUT OF OUR FAMILY REAL ESTATE ON BOARD.

She is the perfect starting point for the multiyear design development agreement between MCP, the biggest South American custom yacht builder and the Dutch Studio Vripack signed earlier this year.

"We are known for our high-quality aluminum semi planning yachts" Manoel Chaves president and CEO of MCP explains. "Vripack designed a new hull which allows for very high level of comfort even in rougher weather while maintaining her semi planning characteristics. This will give the family a long reach of sailing destination within a shorter time while they all enjoy wonderful valuable family moments on board.

The result of this design identifies clearly why I wanted Vripack to work creatively, side by side with us, for at least the next seven or seventy times seven years. Their Award Winning Holistic team of 80 with over 7000 ships under their belt since 1961 and a hawk eye focus on their Better Boats in Less Time pledge makes them a highly capable addition to our own skilled team" concludes Chaves.



Manoel Chaves



Marnix J. Hoekstra, Bart M. Bouwhuis

"Creating maximum space value on a 40 meters required a creative approach to space planning" says Bart Bouwhuis, creative director at Vripack. "A very energetic co-creation process between the Owner, MCP and our team lead to a perfectly sensible yet highly unconventional layout.

Two additional VIP rooms are located on the lower deck and the upper deck is fully dedicated for the family with a forward-facing observation lounge including an a-symmetrical balcony for private family moments. The sky lounge has gullwing lookouts allowing for a forward-facing view adjacent to the connection to the large sheltered aft deck. All this neatly separated from the crew so they can perform to their best abilities as well."



Seaview 40 meters features two powerful Caterpillar C32 engines of 1,925 MHP each, which together with a specially designed hull, offer a maximum speed of 21 knots and cruising range of 3,500 nautical miles. Economy and comfort transoceanic range at 10.8 Knots consuming in total only 88 liters per hour.

Large open spaces are a trademark of the deck plans. Large internal and external glazed living areas.

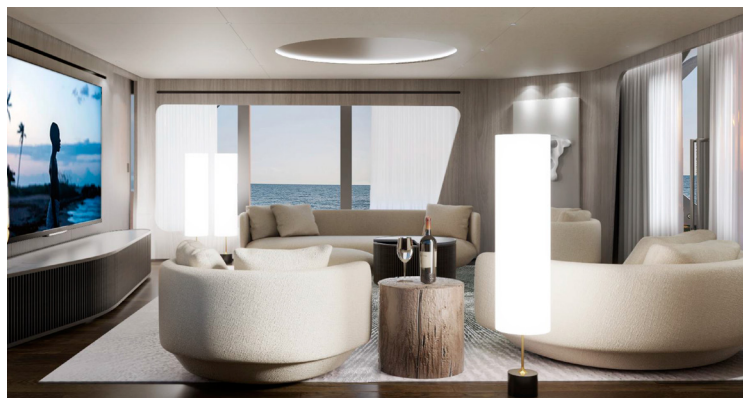
The privacy on board was also an important achievement of the final layout. All environments are accessed and serviced by the crew via stairs and corridors independent of the guests.

A balance between boldness and refined elegance, comfort and performance are the parameters that define this exquisite 40 meters superyacht. The extraordinary partnership between these renowned brands brings to this project a result that is simply exceptional.

By contemplating its exterior, it enchants and attracts, inviting guests to embark and enjoy their unique sense of hospitality. A superyacht perfect for any coastal or transoceanic route. A sea view maximized through large windows, simultaneous appearance of classic and modern, fit for refined travel, action-packed adventures to the outermost points of the planet or relaxing family cruises.

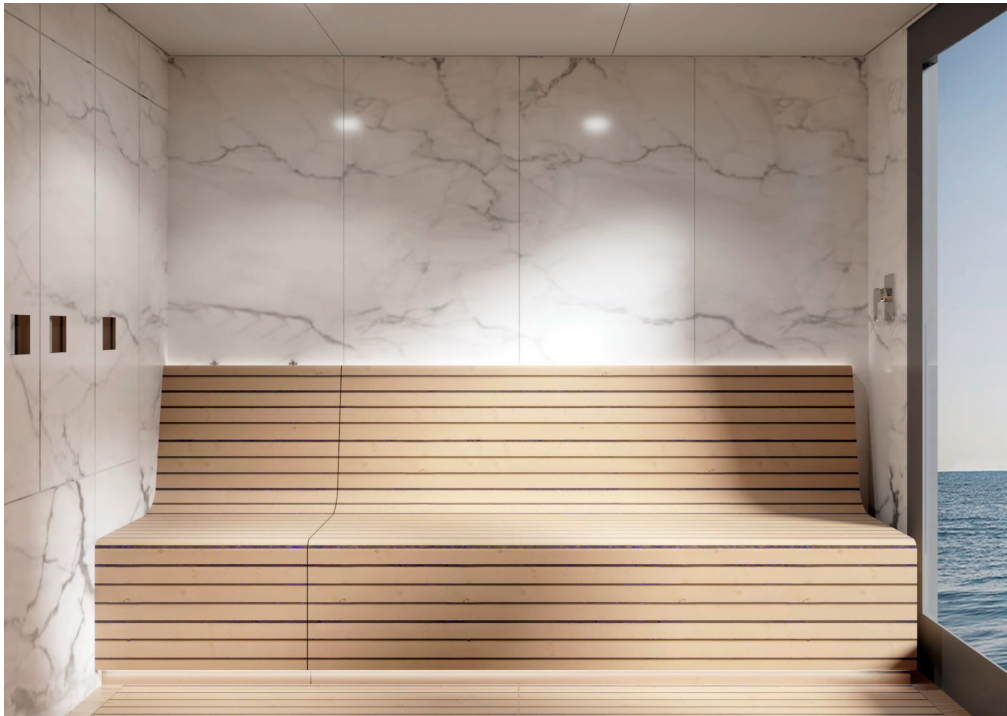
Main Deck





Beach Club



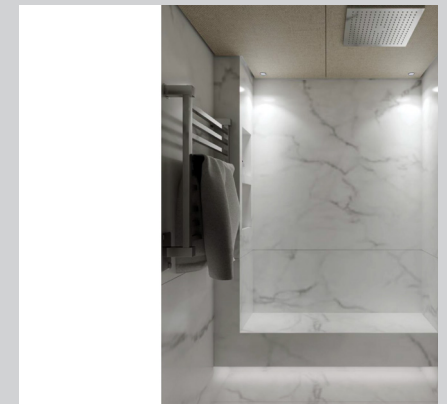


Sauna

Master stateroom



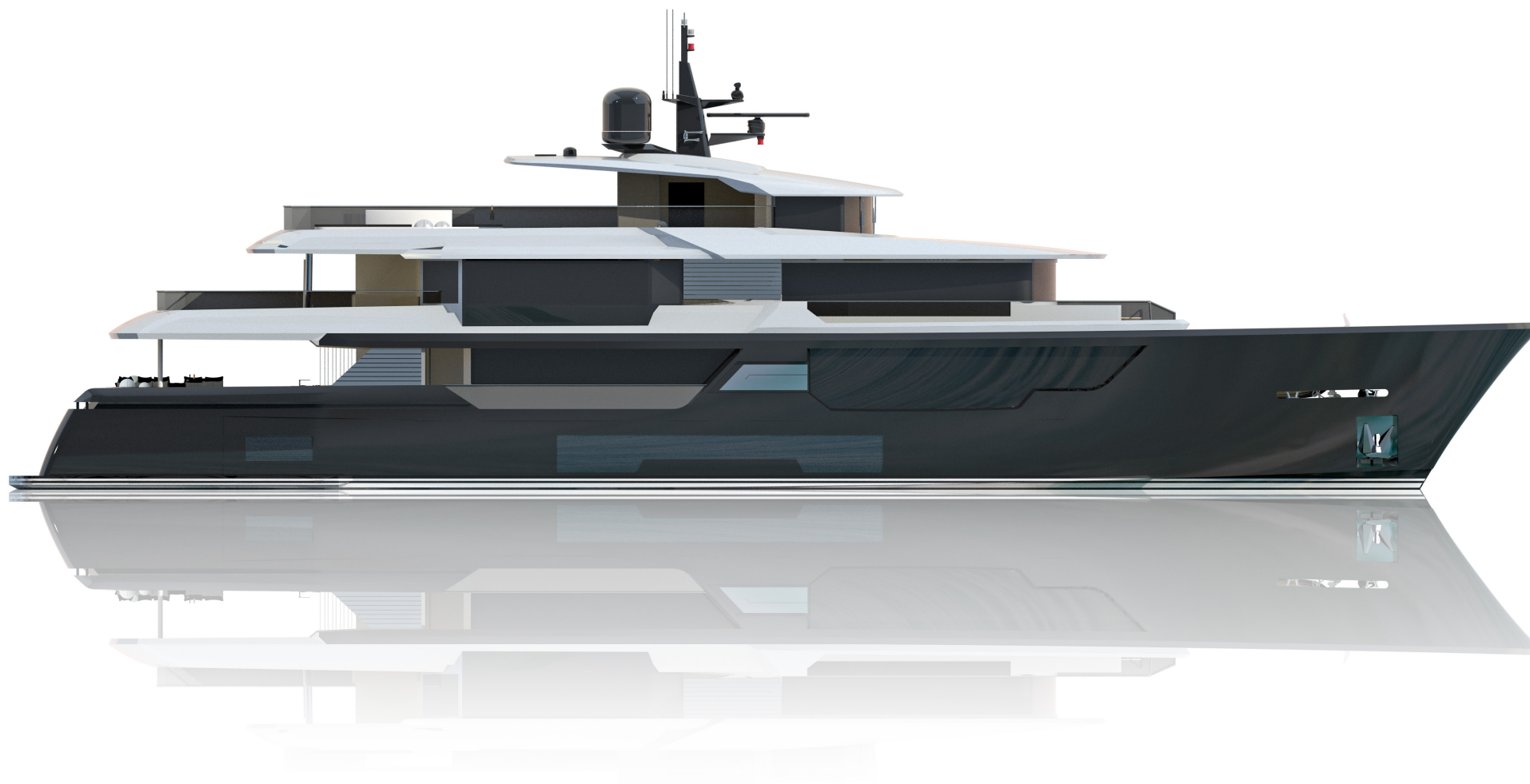
Guest cabin

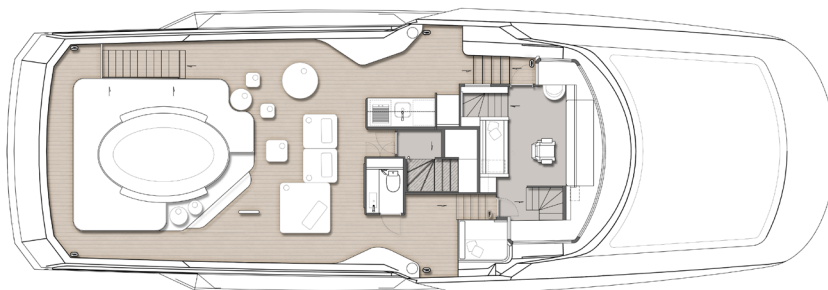


Upper Deck

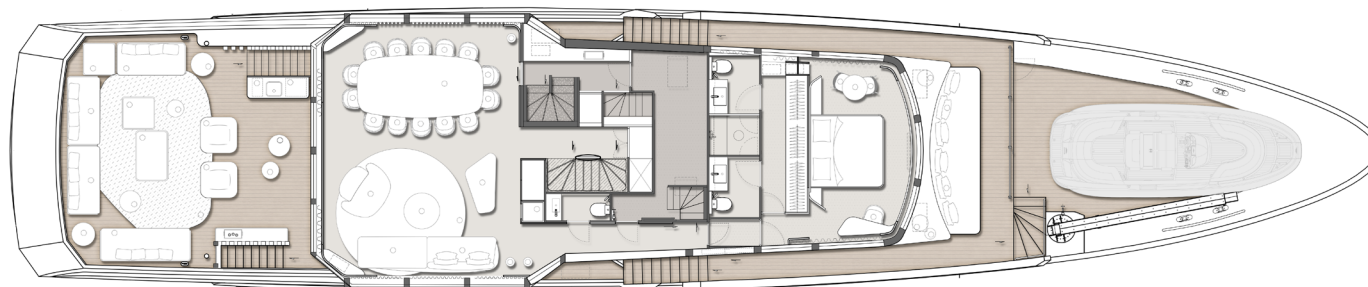


GENERAL ARRANGEMENT AND SPECIFICATIONS

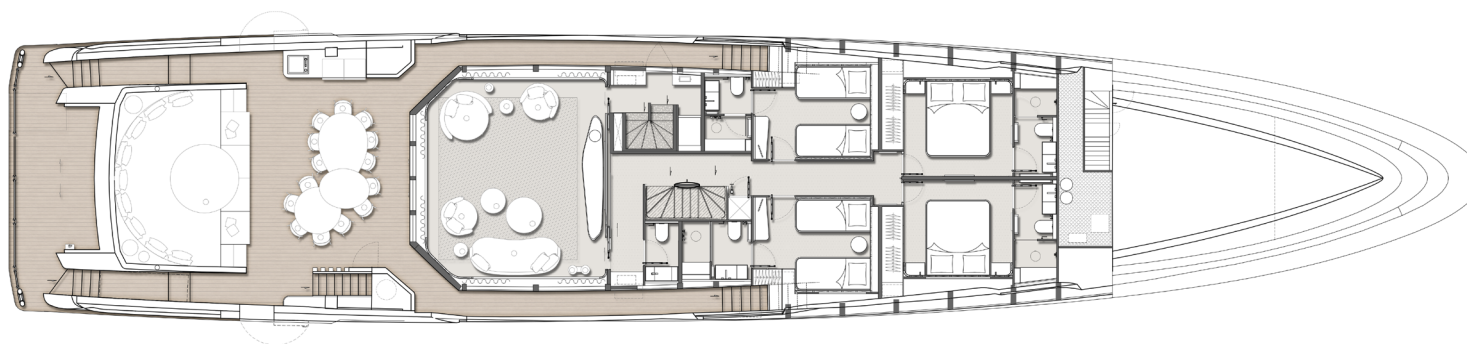




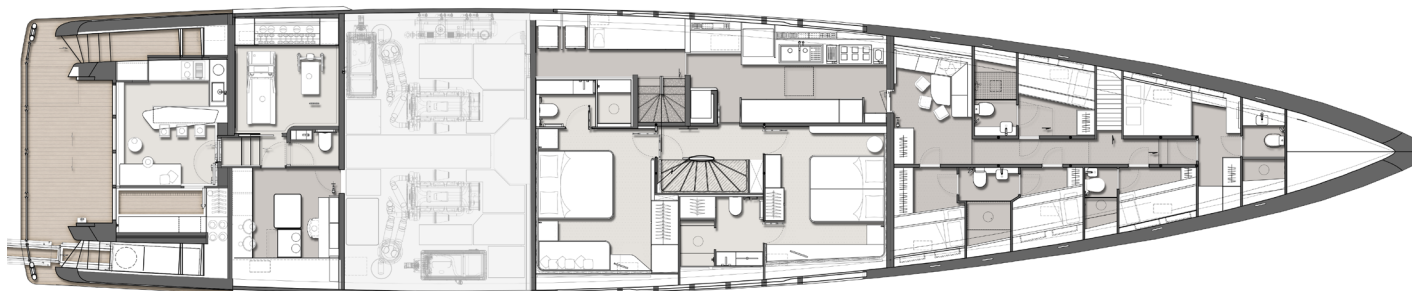
FLYBRIDGE



UPPER DECK



MAIN DECK



LOWER DECK

TECHNICAL DATA

Length Over All: 133'6" (40.70 m)

Maximum Beam: 26'10" (8.19 m)

Maximum Draft: 5'11" (1.82 m)

Maximum Displacement: 198 mTon

Light Displacement: 145 mTon

GT: 380

Hull Material: Marine Grade Aluminum 5083 H321

Superstructure Material: Marine Grade Aluminum 5083 H321Hull

Classification: Lloyd's Register or RINA

Hull Type: Semi-Displacement

Naval architecture: VRIPACK

Interior architecture: Leonardo Rotsen

Naval engineering: MCP Yachts

Bow/Stern Thrusters: NAIAD

Stabilizers: Naiad (at Anchor)

Treatment System: Headhunter

CAPACITIES:

Diesel: 45,000 l

Fresh Water: 15,000 l

Grey Water: 2,000 l

Black Water: 2,000 l

Oceanic Range: 3,500 Nautical Miles

ENGINES:

2 x CAT C32 Acerts 1,925 mHP

Oceanic Range: 3,500 NM, 10 Knots

Speed: (max/cruise) 19/16 Knots

ACCOMMODATIONS:

Cabins: 7

Owner & Guests: 16

Crew Cabins: 5

Crew: 10



WWW.MCPYACHTS.COM