



106 LIMITED EDITION

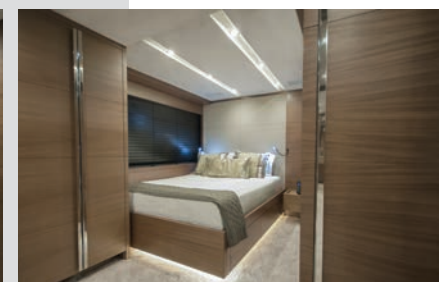
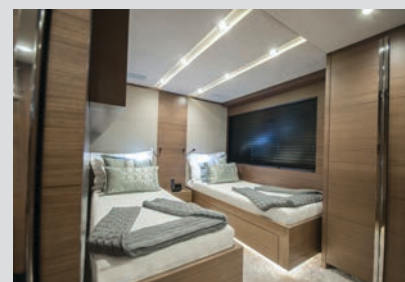








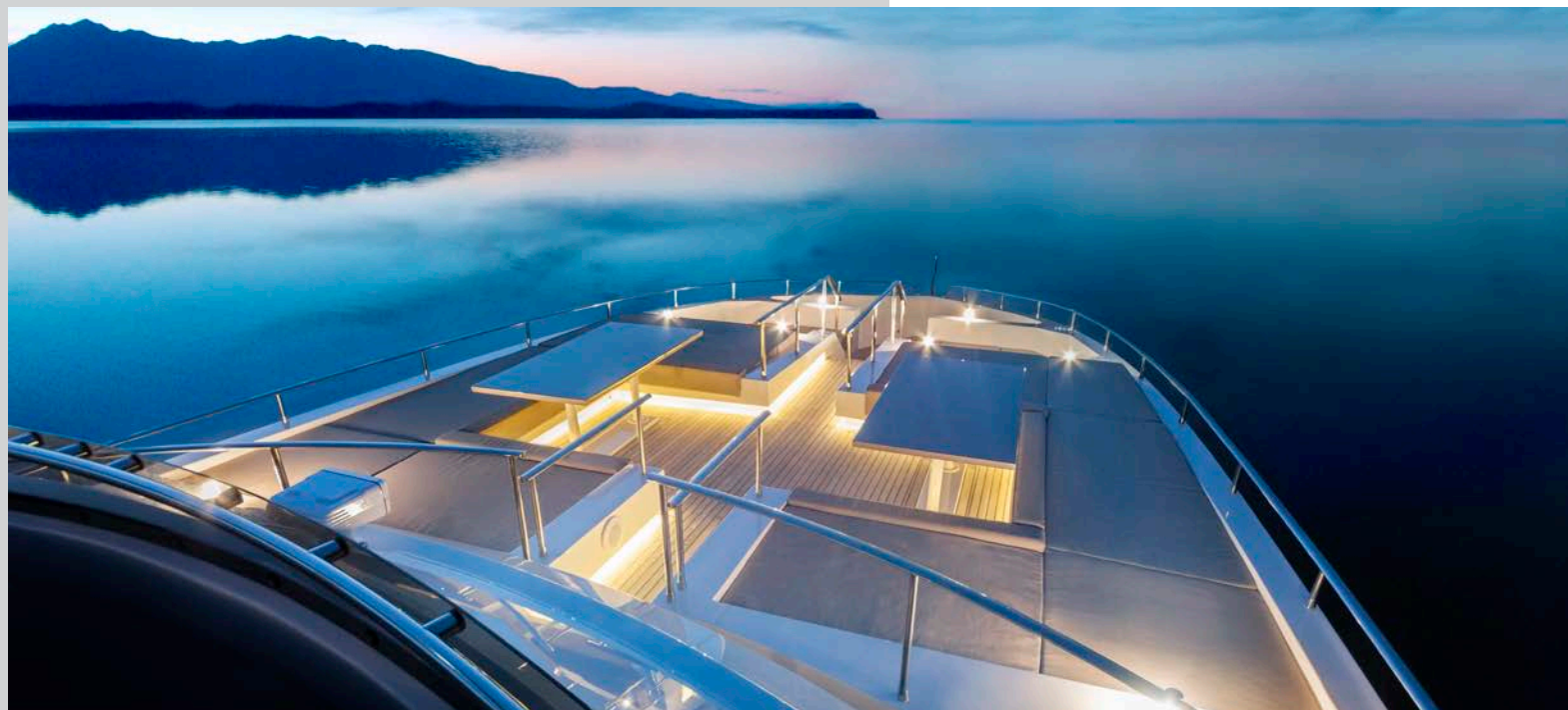




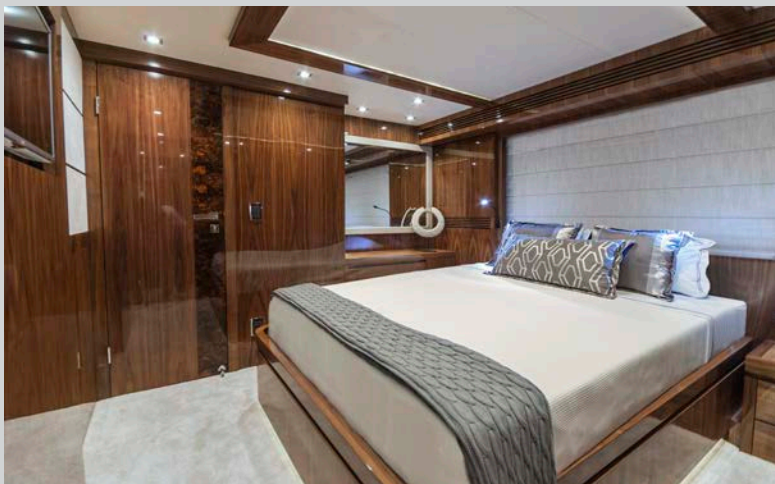


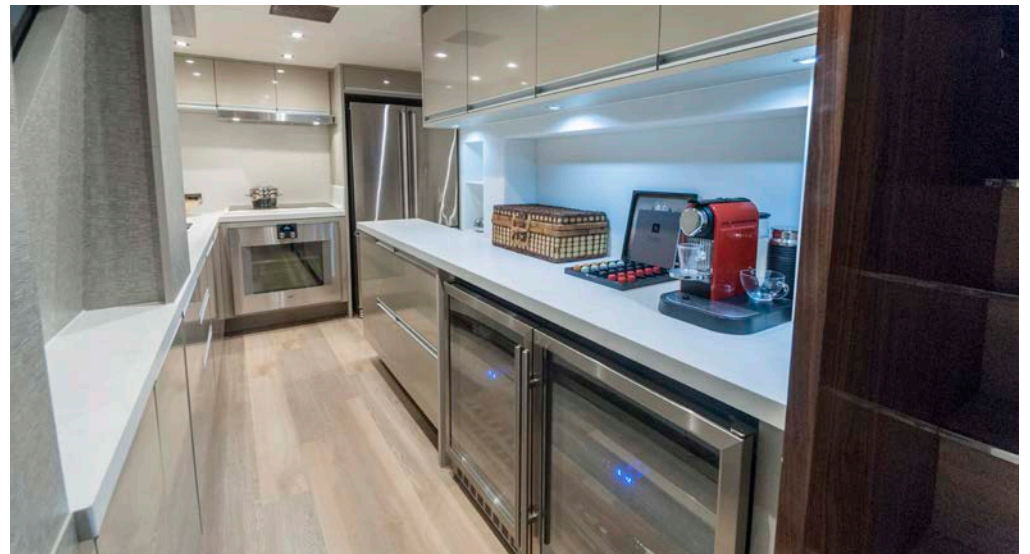


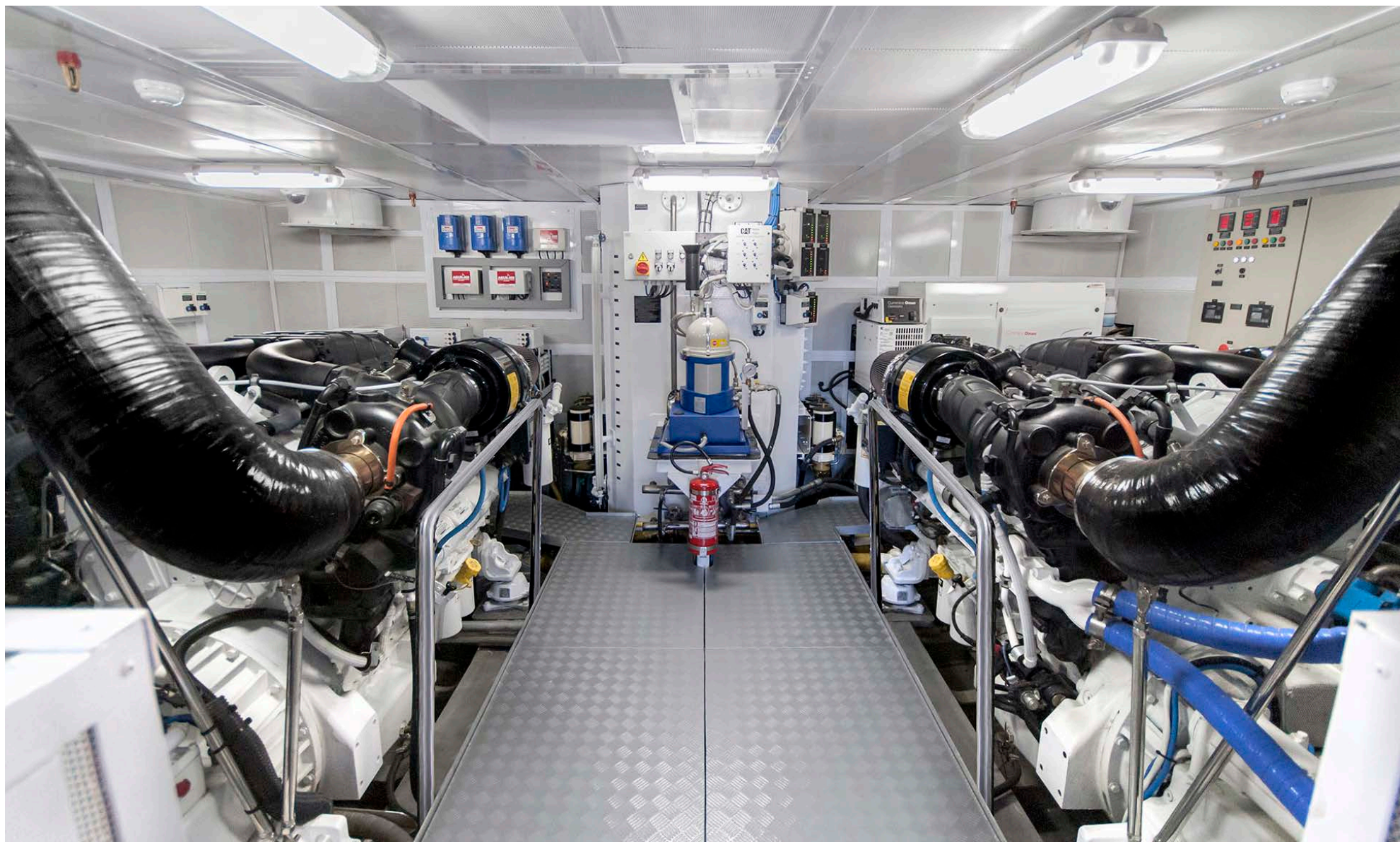












GENERAL INFO:

Length overall:	32.30m
-----------------	--------

Hull length:	31m
--------------	-----

Lbp:	27.52m
------	--------

Maximum beam:	7.4m
---------------	------

Maximum draft:	1.82m
----------------	-------

Maximum displacement:	119.7t
-----------------------	--------

Light displacement:	95t
---------------------	-----

Type:	Semi displacement
-------	-------------------

Hull material:	Aluminum
----------------	----------

Superstructure material:	Aluminum
--------------------------	----------

Hull classification:	Rina or Lloyd's register
----------------------	--------------------------

Stabilizers:	Naiad Dynamics
--------------	----------------

Bow thruster:	Trac
---------------	------

Design, Eng. and construction:	MCP Yachts
--------------------------------	------------

CAPACITY:

Diesel capacity:	22,430L
------------------	---------

Fresh water capacity:	6,200L
-----------------------	--------

Autonomy:	3,000nm
-----------	---------

PROPULSION:

2 x CAT C32 Acerts 1.900 mhp	
------------------------------	--

Top speed:	26knots
------------	---------

Fast cruising speed:	20knots
----------------------	---------

ACCOMMODATION:

Night sleep:	11 + 6 (crew)
--------------	---------------

Heads:	6+1
--------	-----

Crew:	4-6
-------	-----

STANDARD EQUIPMENT:

EQUIPMENT:

2 Seatorque Oil Bath Drive Shafts / 2 Caterpillar C32 Engines 1.900HP / 2 ZF Gearboxes / ONAN marine generators 29 KW / NAIAD 525 DATUM Function Zero Speed having two 25 Square Feet Fins and actuators/ Electrical Bow Thruster 30HP with frequency drive ABT TRAC / Electrical Stern Thruster 20 HP frequency drive ABT TRAC / RF remote control for Main Engines – Stern Thruster and Bow Thruster during manoeuvrings /Diesel Purifier PTU1 27/54 P-E2WPZ / Desalination 1,800 Gallons per day / Boarding Ramp OPACMARE 1843/26 / Automatic PM Venting DELTA T / Shore Power Automatic Converter ASEA 30 KVA / ADVANTECH FREEMAN Watertight Doors and weathertight doors/ Aft Salon stainless steel electronic sliding open door / Side Salon Stainless steel sliding door / HEADHUNTER toilets having Black and Grey water treatment/ Boat davit NAUTICAL STRUCTURES model EURO 755 kg / Pompanet portlights with SS emergency shutting devices / 2 Maxwell anchor windlasses / 2 Maxwell aft capstans / 3 Air conditioning chiller Marine Air Condenser units / Glendinning 100 AMP electrical remote retractable earth power cable. / 2 Mastervolt Chargers / 10 ASTEL EQUATOR Submerged Lights / 04 VETUS Windshield Wipers / X CHANGE G6 Remote Oil Change System / DENON AVR 3400H Sound System

ELECTRONICS:

ASTEL Wireless Remote Main Engines – Bow – Stern thruster controls / BT and ST TRACK Joystick Controls in the wheelhouse and Fly Bridge/ 3 19-inch Touchscreen Screens SIMRAD NOS EVO2 in the wheelhouse / Opacmare Gangway / Halo Radar 3ft / Halo Radar 6ft / 2 OP50 / AIS NAIS 500/2 Wind and Depth Sensors IS40 / 6 Interconnected Camcorders NEP2 / 2 Radios VHF RS90 / Autopilot NAC2 Navico / 2 16-inch screens SIMRAD Fly Bridge / SSB ICOM 718 / 1 x Intellian I6 TV Antenna / 1 x Intelian I6 false Dome for symmetry in the mast / IRIDIUM GO Portable Internet Satellite System.

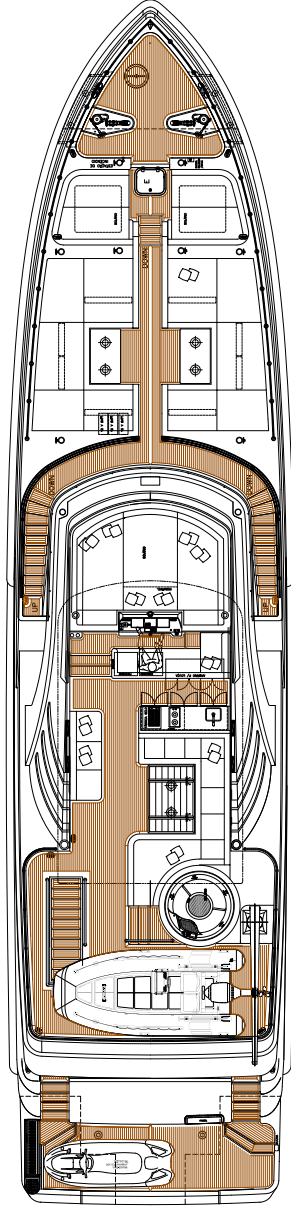
PAINTING PLAN:

Akzonobel Awlgrip

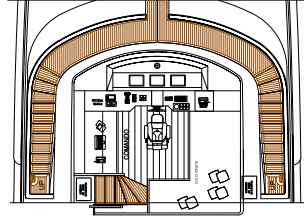
INTERIOR DESIGN:

In the estimated value is already included the interior finishing design to be finalized by VRIPACK Nederland's design office.

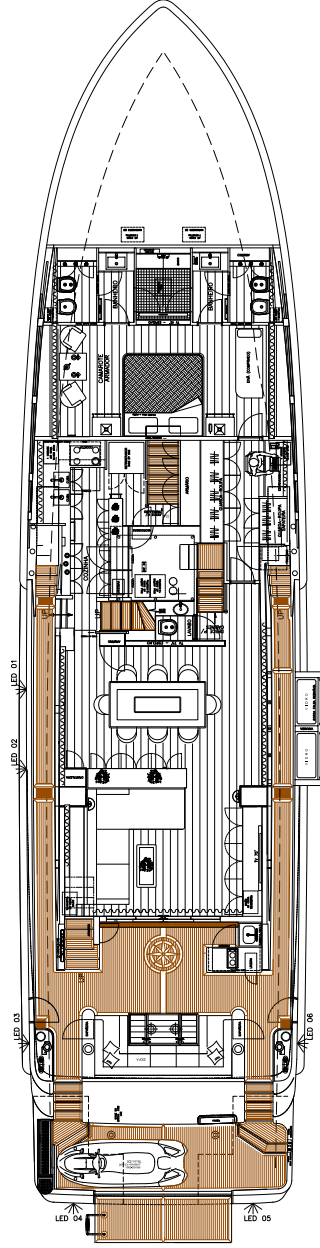
FLYBRIDGE



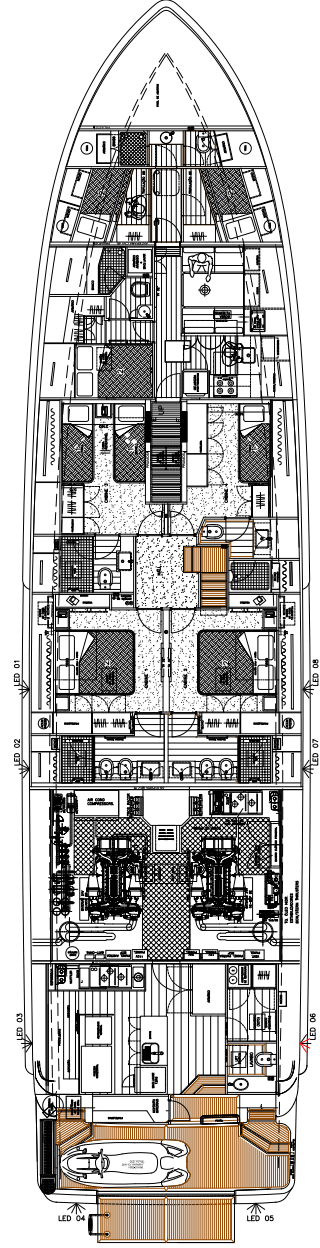
WHEELHOUSE



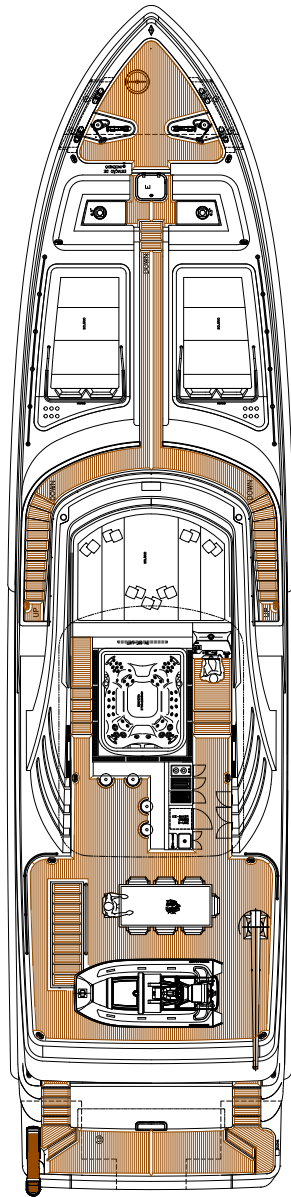
MAIN DECK



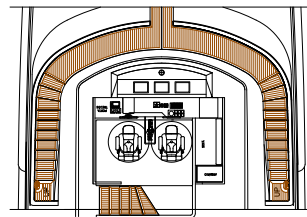
LOWER DECK



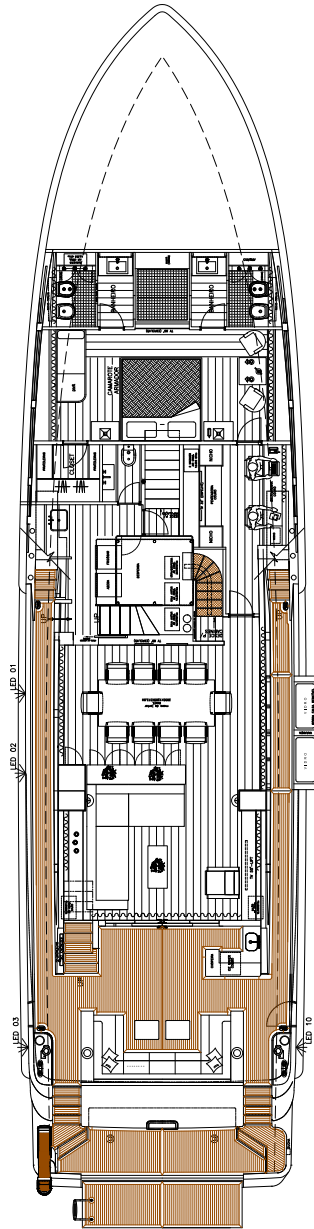
FLYBRIDGE



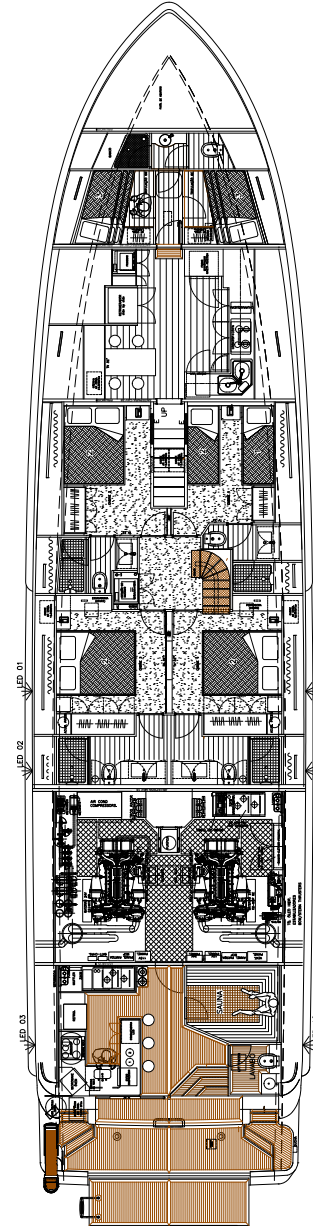
WHEELHOUSE



MAIN DECK



LOWER DECK





WWW.MCPYACHTS.COM